







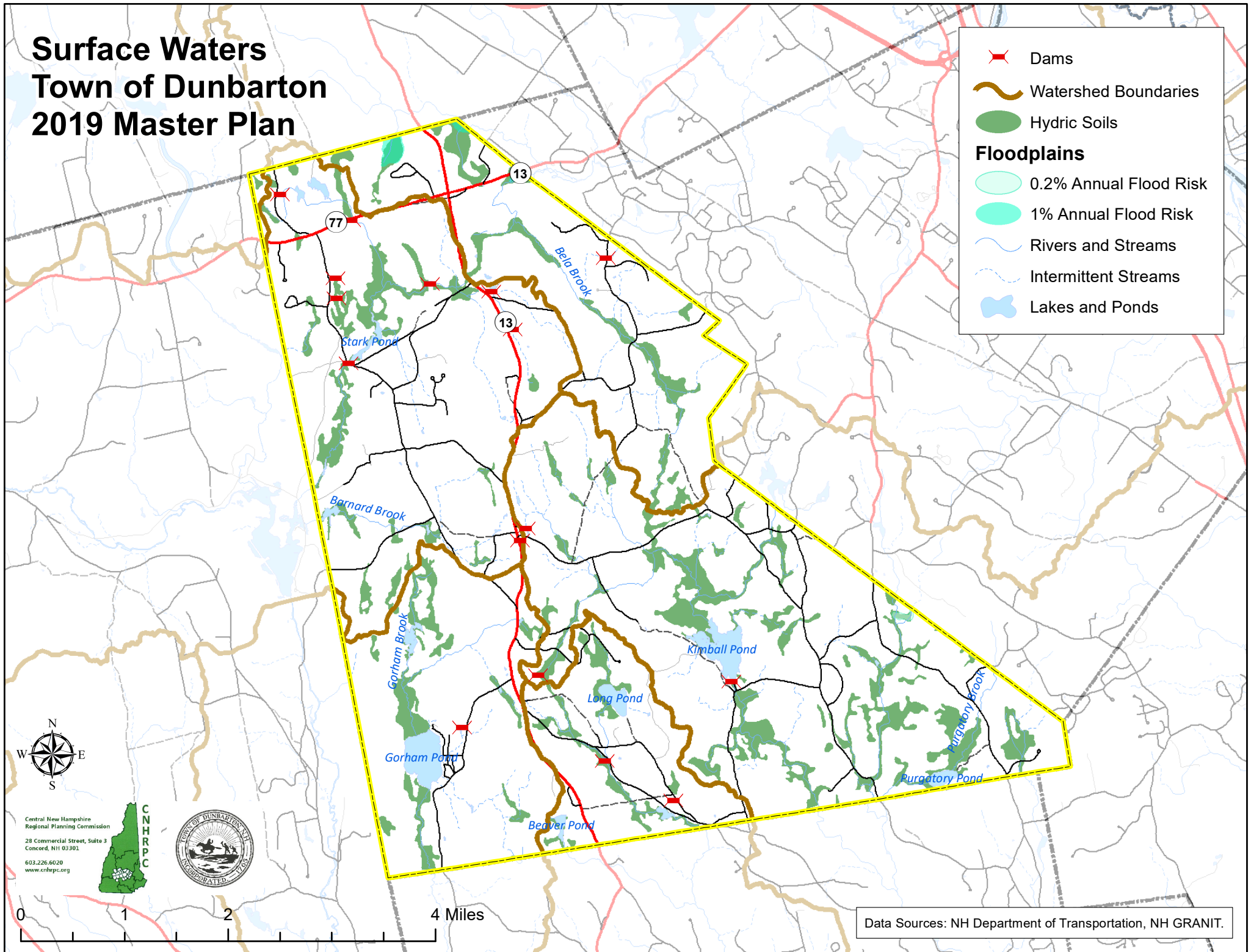


Surface Waters Town of Dunbarton 2019 Master Plan

-  Dams
-  Watershed Boundaries
-  Hydric Soils
- Floodplains**
-  0.2% Annual Flood Risk
-  1% Annual Flood Risk
-  Rivers and Streams
-  Intermittent Streams
-  Lakes and Ponds



Central New Hampshire
Regional Planning Commission
28 Commercial Street, Suite 3
Concord, NH 03302
603.226.6020
www.cnhrpc.org



Data Sources: NH Department of Transportation, NH GRANIT.