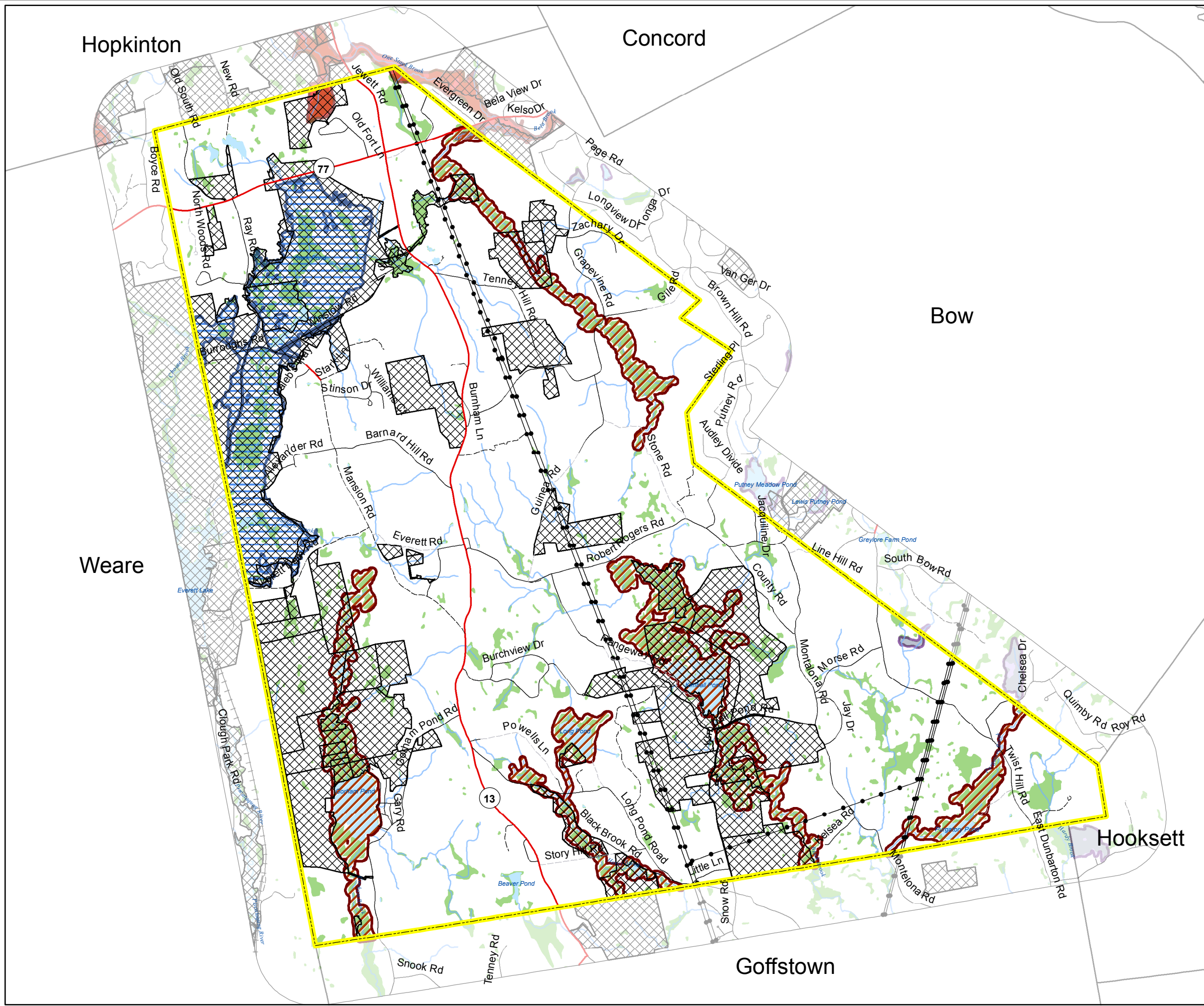


Dunbarton

Green Infrastructure Conservation Priority Plan

Map 2. Wetlands Conservation District With Flood Storage Areas



Legend

- Wetlands Conservation District
- Army Corps Flowage Easement
- Lands Under Conservation
- Wetlands
- Lakes and Ponds
- Rivers and Streams
- Power transmission line
- 1% Annual Flood Risk
- 0.2% Annual Flood Risk

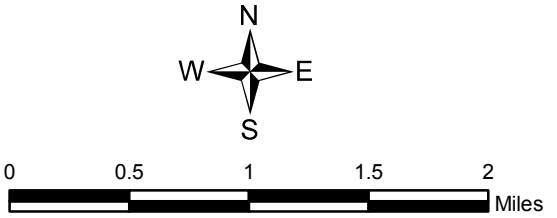
Roads

- Class I, II, IV State Highways
- Class V Town Maintained Roads
- Class VI Unmaintained Roads
- Other (private roads, trails, etc.)
- Dunbarton Town Boundary

Data Sources: 1:24,000 source scale data from NH GRANIT; NH Department of Transportation; Town of Dunbarton.

NOTE: "Lands Under Conservation" includes publicly and privately owned lands as well as properties under deed restriction or conservation easement. The lands shown here include local, state, federal, and private ownership and/or management.

This map is intended for planning purposes only. Created May 2010 by CNHRPC.



Central New Hampshire
Regional Planning Commission
28 Commercial Street
Concord, NH 03301
603.226.6020
www.cnhrpc.org

CTAP
New Hampshire Communities Planning Together

Funding provided by the NH Department of Transportation through the I-93 Community Technical Assistance Program.